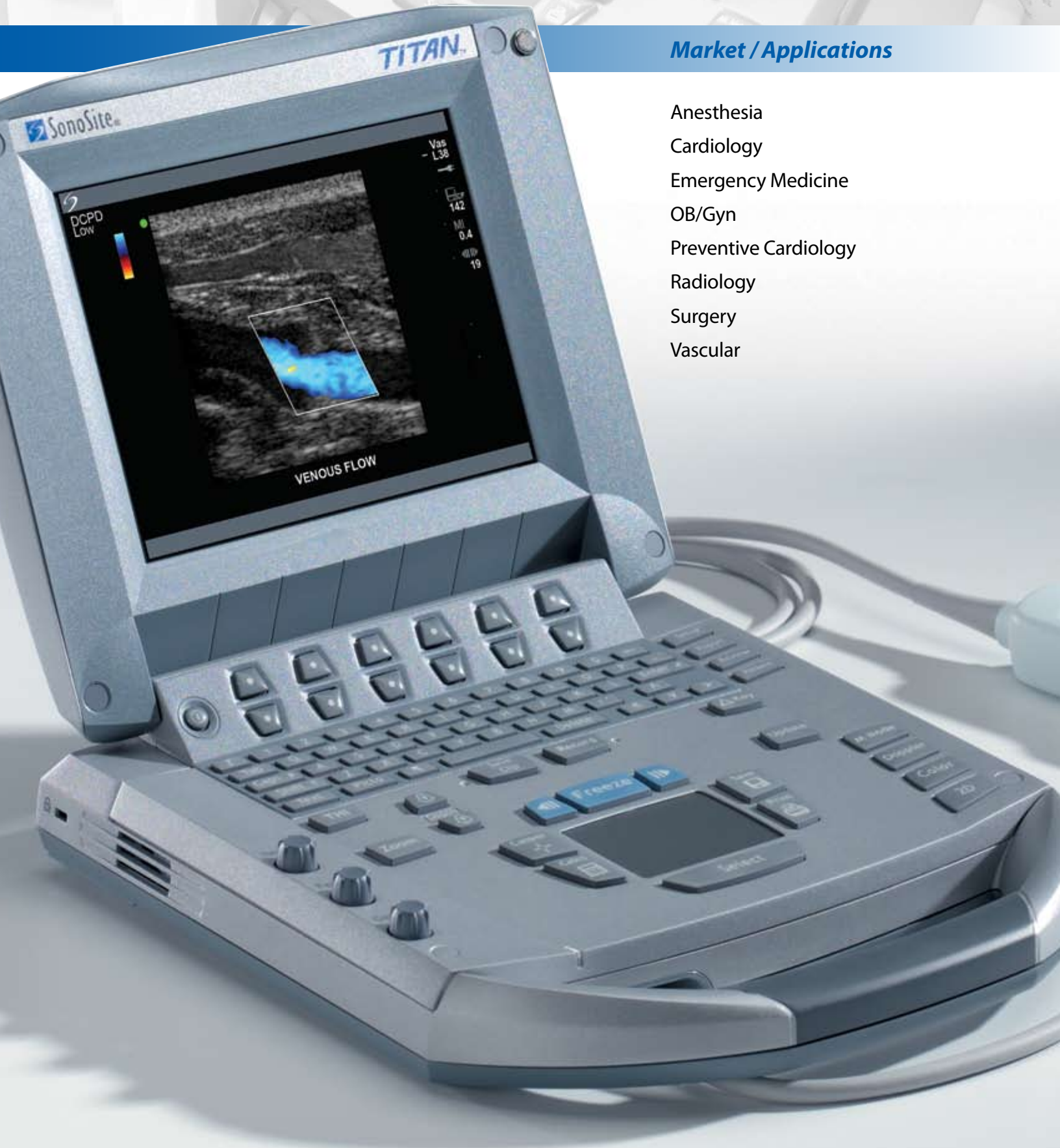


**Market / Applications**

- Anesthesia
- Cardiology
- Emergency Medicine
- OB/Gyn
- Preventive Cardiology
- Radiology
- Surgery
- Vascular



# TITAN® System Specifications

## System Specifications

System weight: 7.7 lbs.  
System dimensions: 11.9" L x 10.9" W x 3" H  
Display: Integrated fully digital 8.4" (diagonal) TFT color Liquid Crystal Display

## Mobile Docking System

Mobile Docking System dimensions: 31.9" L x 22.6" W  
x adjustable height 33.2" to 45.1"  
Storage available for fully integrated printer, DVD and/or VCR storage area  
Optional connector for 3 transducers – changes by simple electronic switching  
Optional 11.8" (diagonal) monitor

## Imaging Modes

2D  
Split screen  
Zoom  
Color power Doppler  
M-Mode  
3 sweep speeds, 1/2 1/2, 1/3 2/3 or full screen options  
Pulsed wave (PW) Doppler  
Continuous wave (CW) Doppler  
Velocity based color flow Doppler  
Duplex imaging  
3 sweep speeds, 1/2 1/2, 1/3 2/3 or full screen options  
Tissue Harmonic Imaging (THI)

## Transducers

All transducers are lightweight with rapid, pinless connectors and feature a user selectable menu to adjust frequency settings to suit the patient's size. Settings are Penetration, General and Resolution imaging.  
C60/5-2MHz broadband curved array for general purpose, abdominal and obstetric imaging. 2D, CPD, DCPD, PW Doppler.  
ICT/8-5MHz broadband intracavitary transducer for obstetric and gynecologic imaging. 2D, CPD, DCPD, PW Doppler.  
C11/8-5MHz broadband tightly curved array for neonatal and pediatric imaging. Applications include general imaging, abdominal, cardiac and neonatal heads. 2D, CPD, velocity color, PW and CW Doppler.  
C15/4-2MHz broadband tightly curved array. Applications include adult cardiology general imaging, abdominal. 2D, CPD, velocity color, PW and CW Doppler.  
L25/10-5MHz broadband linear array. Applications include nerve, vascular, and superficial imaging. 2D, CPD.  
L38/10-5MHz broadband linear array. Applications include small parts, breast, vascular, musculoskeletal & superficial imaging. 2D, CPD, velocity color, PW Doppler.  
HST/10-5MHz broadband linear array. Applications include intraoperative vascular & superficial imaging. 2D, CPD, DCPD, PW Doppler.  
C8/8-5MHz broadband intracavitary transducer for prostate imaging. Biopsy guide available. 2D, CPD, DCPD, PW Doppler.

## Remappable Controls

Softkeys to drive advanced features.  
Delta key: user selectable functions can be assigned to the delta key for increased ease of use.

## System Parameters

System dynamic range: Up to 155dB  
Frame rates up to 150Hz maximum acquisition, 60Hz internal video display.

## Image Storage and Cine

Storage: High capacity using flash card. 64MB card stores 128 images (approx).  
Cine: Review of up to 220 frame-by-frame images.  
Connect directly to a PC with SiteLink Image Manager software using a USB cable from the system. Allows transfers of high resolution bitmap images. Software allows batch compression to JPG on PC.  
Image transfer can be active while live scanning on TITAN.

## Clinical Analysis Package

OB Calculation Package  
Obstetric package includes fetal biometry measurements via user selectable authors.  
Vascular Calculation Package  
Vascular package includes Lt/Rt CCA, ICA, ECA, ICA/CCA Ratio, user defined ratio, angle correction, volume flow.  
Volume calculations via diameters.

## Measurement Tools

2D  
Distance calipers – two sets  
Ellipse for area and circumference measurements  
M-mode  
Distance and time caliper set  
Heart rate  
Doppler  
Velocity caliper – two sets provide peak velocity RI & S/D ratio.  
Volume Flow

## Power

Operates via battery or AC power – from 1.5 up to 4 hours on fully charged battery, new battery life depends on the active functions used and keystrokes.  
Battery: Rechargeable lithium ion  
AC: Via universal power adapter, 100-240 VAC, 50-60 Hz

## Display Annotation

Text and pictograms  
User selectable application specific text via function keys.

## Peripheral Connections

Composite video output (NTSC/PAL) to video cassette recorder, video printer or external monitor.  
Connect to a PC via USB to download high resolution bitmap images.  
S-video output  
Ethernet output  
VGA output

## Connectivity

DICOM print and storage class software available  
DICOM worklist

## Software (post-processing)

SonoCalc™ IMT automated edge detection software for assessment of intima media thickness  
SiteLink image management software (DICOM and Non-DICOM).



# SonoSite

www.sonosite.com

## WORLDWIDE HEADQUARTERS

SonoSite, Inc., 21919 30th Drive SE, Bothell, WA 98021-3904 USA  
Tel: (425) 951-1200 Toll Free: (877) 657-8050 Fax: (425) 951-6800  
E-mail: admin@sonosite.com

## EUROPEAN HEADQUARTERS

SonoSite Ltd., Alexander House,  
40A Wilbury Way, Hitchin,  
Herts SG4 0AP, United Kingdom  
Tel: +44 (0)1462 444800  
Fax: +44 (0)1462 444801  
E-mail: europe@sonosite.com

## SonoSite Worldwide Offices

SonoSite Australasia Pty Ltd – Australia	1-300-663-516
– New Zealand	0-800-888-204
SonoSite KK - Japan	81-3-5304-5337
SonoSite SARL - France	31-1-69-18-96-30
SonoSite GmbH - Germany	49-(0)91-31-97-79-29-0
SonoSite Iberica SL - Spain	34-91-640-49-11
SonoSite Ltd - China - Shanghai	86-21-523-966-93
SonoSite Canada Inc. - Canada	1-888-554-5502