



**ACUSON Cypress Cardiovascular System *PLUS***  
Portable and complete cardiovascular applications



# ACUSON Cypress

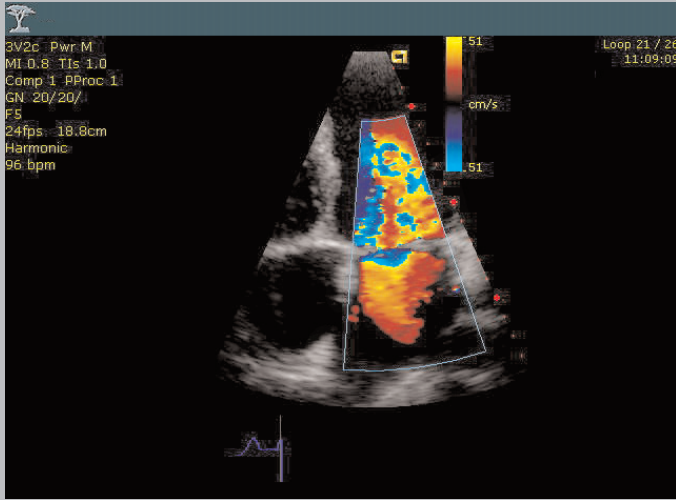
## CARDIOVASCULAR SYSTEM *PLUS*

The ACUSON Cypress™ cardiovascular system *PLUS* delivers advanced ergonomic design and premium cardiovascular performance in a fully digital, portable, hand-carried unit. The Cypress system features comprehensive echocardiography and vascular applications, and is designed to work in all of your busy clinical environments – from small private office or hospital echo lab to the patient bedside, emergency room, operating suite, and critical care unit.

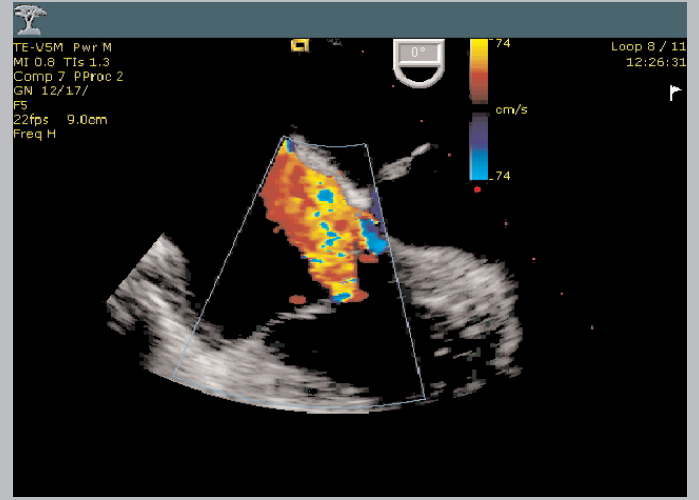
### Comprehensive Applications

The only portable system on the market with a complete range of cardiovascular applications, including:

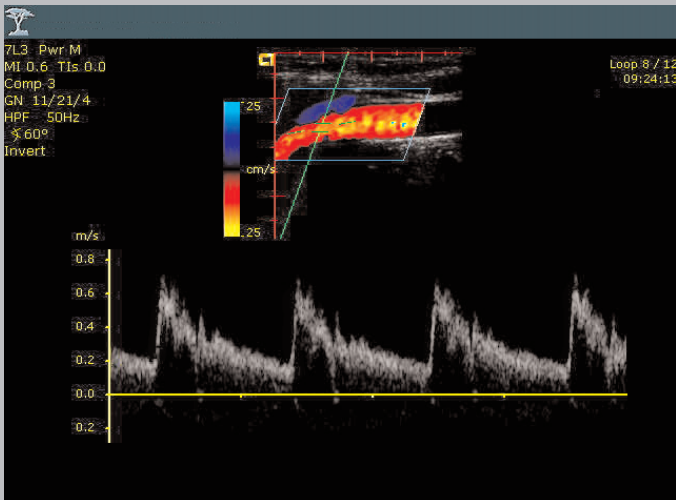
- Adult and pediatric transthoracic echocardiography (TTE)
- Multiplane transesophageal echocardiography (TEE)
- Intracardiac echocardiography (ICE) with ACUSON AcuNav™ ultrasound catheters
- Peripheral vascular
- Abdominal vascular
- Comprehensive measurements and calculations as well as report and analysis packages, including integrated stress echo



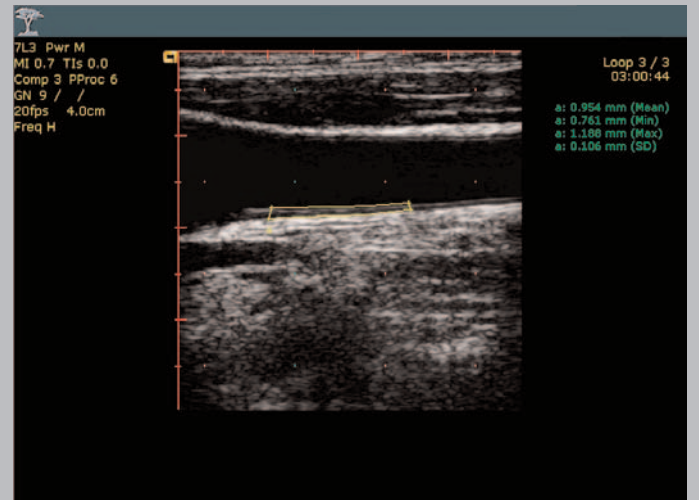
Mitral stenosis. Transthoracic 4CH LAX view. High sensitivity and temporal resolution in Color Doppler Velocity mode.



Moderate tricuspid regurgitation. Excellent sensitivity and resolution of multiplane transesophageal imaging in Color Doppler Velocity mode.



Normal proximal internal carotid artery. High sensitivity and resolution in Color Doppler Velocity and PW Spectral Doppler mode.



Intima-media thickness measurement in normal common carotid artery using IMT application package.





# ACUSON Cypress

## Workflow Solutions

- Advanced ergonomic design with home-base control layout makes the Cypress system easy-to-learn and easy-to-use
- Network connectivity with CypressViewer™ ultrasound software allows for cost effective offline study review and analysis on a PC
- Digital connectivity with DICOM standard output to PACS and DICOM Modality Worklist for streamlined workflow and communication
- Transesophageal transducer compatibility across all Siemens echocardiography platforms allows universal use of the same V5Ms TEE transducer in all of your clinical environments
- Instant conversion from a highly maneuverable, height adjustable, cart-based system to a hand-carried unit allows extensive patient access

## High Performance

- Fully digital, proprietary system architecture enables outstanding imaging performance typically seen on high end systems for uncompromised diagnostic confidence
- Advanced transducer technology migrated from the ultra-premium ACUSON Sequoia™ ultrasound system for superior image quality
- High temporal resolution and sensitivity in color Doppler due to multiple beam formation provides highly detailed information for improved patient outcomes



## Specifications

### Operating Modes

- 2D fundamental and harmonic imaging
- Color Doppler Velocity
- Color Doppler Energy
- M-mode
- PW spectral Doppler
- CW spectral Doppler
- Duplex with PW and CW Doppler

### Transducers

- 3V2c: Adult TTE, 2-4 MHz phased array
- 7V3c: Pediatric TTE, 3-7 MHz phased array
- 7L3: Vascular, 5-7 MHz linear array
- 4C1: Abdominal, 2-4 MHz curved array
- V5Ms: Adult multiplane TEE, 3-6 MHz phased array used on all ACUSON echocardiography systems (requires V5Ms Adapter for micropinless MP connector)
- ACUSON AcuNav™ 8F ultrasound catheter, ICE, 5-7 MHz
- ACUSON AcuNav™ 10F ultrasound catheter, ICE, 5-7 MHz
- Aux CW: 2 MHz, Adult and pediatric TTE, non-imaging, CW spectral Doppler
- EC601BF connector type

### Options

- Integrated Stress Echo
- Intracardiac Echo (ICE)
- Intima-Media Thickness (IMT) Measurements
- Advanced Triggering
- DICOM Network Output
- Custom Cart

### Physical specifications

- Weight: 19 lbs / 8.6 kg
- Height: 13.67" (34.7 cm)
- Width: 15.58" (39.6 cm)
- Depth: 7.64" (19.4 cm) – with keyboard up; 17.0" (43.2 cm) – with keyboard down
- Integrated digital 12.1" (30.7 cm) flat panel display with tilt
- Optional mobile custom cart: integrated Cypress system mounting platform with latch, 12" / 30.7cm height adjustment, 4-wheel pivot, 3 transducer holders, gel holder, shelves for peripherals and storage, Uninterruptible Power Supply (UPS), cable management

### Power Requirements

- Universal power supply for North America and International requirements
- Input voltage: 100-120/200-240 V AC
- Frequency: 50-60 Hz
- Current 1.2/0.6 A
- Nominal input power: 144 VA

*ACUSON AcuNav™ ultrasound catheter,  
ACUSON Cypress™ cardiovascular  
system PLUS, ACUSON Sequoia™  
ultrasound system and CypressViewer™  
ultrasound software are registered  
trademarks of Siemens AG.*

Siemens Medical Solutions USA, Inc.  
Ultrasound Division  
1230 Shorebird Way  
P.O. Box 7393  
Mountain View, CA 94039-7393 USA

**Headquarters**

Siemens Medical Solutions USA  
51 Valley Stream Parkway  
Malvern, PA 19355-1406 USA  
Telephone: +1-888-826-9702  
[www.usa.siemens.com/medical](http://www.usa.siemens.com/medical)

**Contacts**

Europe: +49 9131 84-0  
Asia Pacific: +65 6341-0990  
Latin America: +1-786-845-0697

Siemens Medical Solutions USA, Inc.  
Ultrasound Division  
1230 Shorebird Way  
P.O. Box 7393  
Mountain View, CA 94039-7393 USA  
Telephone: +1-888-826-9702

Siemens **Medical**  
**Solutions** that help

© 04.2006, Siemens AG  
A91US-7-1C-A400  
Printed in USA  
DB 0406 10.0